

Time-Saving Features

Introducing the EZT-570i Touch Screen Controller

EZ Programming • EZ Datalogging • EZ To be Connected to Your Test World



CSZ's EZT-570i controller offers a 7" or 10" touch screen and the latest in test chamber programming. Flexible configurations along with a full range of user-friendly features combine to simplify programming and save valuable time for greater return on your investment. Intuitive controller includes built-in data security & safeties to protect your chamber and product under test.

Communications & Connectivity, Accessibility from Anywhere

- Ethernet capability to remotely monitor and control multiple test chambers. Wired, wireless, local area network or World Wide Web Ethernet connectivity provides anytime, anywhere access. Three options to remotely control & monitor your chambers:
 1. Use a web browser and type in a web address to monitor your chamber from any computer or wireless PDA device.
 2. Use Ethernet to monitor and control from your computer or wireless PDA device (i.e. iPad, iTouch, etc.).
 3. Use CSZ optional EZ-View software to monitor & control multiple CSZ chambers and download profiles.
- Automated "ftp" back-up of data files to server provides "hassle free" file management.
- Alarm notification system sends email and/or text phone messages in the event of a chamber alarm, saving valuable tests while reducing downtime.
- Email alarm and/or audit trail files from controller with a touch of a button.
- Compose & send email messages directly from the controller.
- EIA-232/485 Serial Communications and optional GPIB (IEEE-488).



Integrated communications system incorporates web, data and email access so there is no need for separate devices such as recorders, data loggers, email programs, etc.

Enhanced Communications options

- Digital input option provides 8 inputs that can be configured for various control functions including starting, stopping and pausing a profile. "Wait for" function allows the user to pause a profile during a particular step of the profile until a specific digital input is turned on or off.
- Digital output "customer event" feature now provides all 15 outputs with purchased option. Each output can be configured to perform other operations including alarm or profile status indicators for more control over your testing.



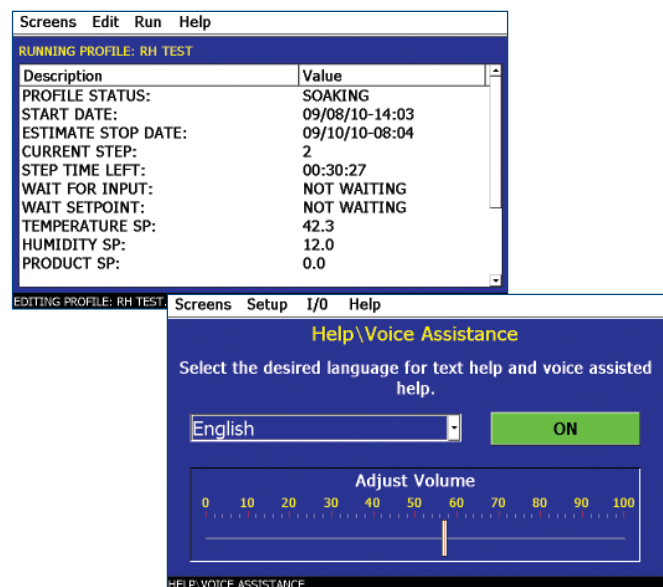
Data Logging

- Easily download profiles, alarm files, audit trail files and data files to a USB compatible memory stick in a compatible .CSV file format. Also import profiles to other chambers saving valuable profile entry time.
- Access data files directly from controller or PC.
- Digital Signatures to guarantee data integrity & traceability for tamper-proof data & audit trail files.
- Unlimited operator events/comments may be added to a data file.
- Records batch & lot values to data files.
- Customize files names and include batch & lot numbers in data file.
- Real time & historical trend graphs include drag-n-zoom feature and the ability to print graphs directly to a printer.
- Audit trail files tracks changes in settings by each user.
- Monitor option provides up to 8 inputs for monitoring with individual alarms, displays, and data logging for each input.



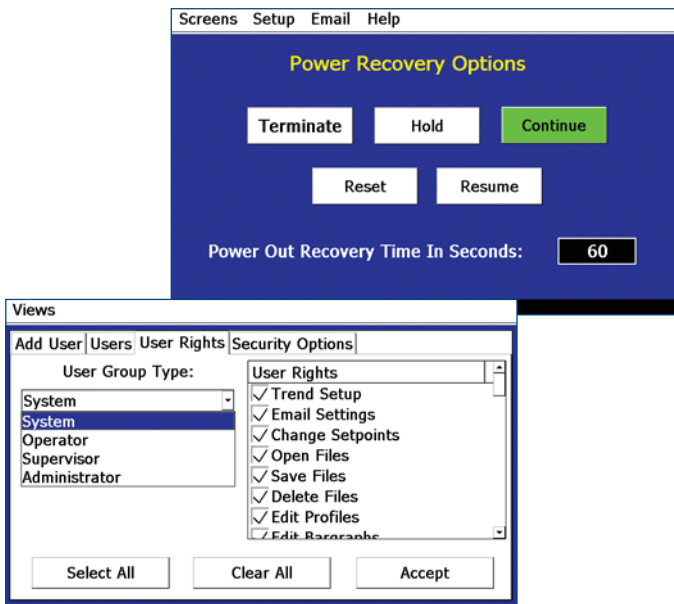
User Convenience & Flexibility

- High resolution (800 x 480 pixels), Windows CE 7" operator interface with an optional 10" screen.
- Unlimited profiles with up to 99 steps each.
- Profile status view provides details on the profile with stop date/time.
- Profile autostart allows profiles to begin at a date, day and time.
- Plot profile screen at-a-glance view of current profile. Loop trends screen shows a real time graph showing progress of running profile.
- Help menu provides text and voice assistance in multiple languages (English, Spanish, French or Chinese).
- Alarm resolution/troubleshooting help.
- Access alarm history files and view detail for troubleshooting.
- System monitor displays run time and cycles of all major components.
- Optional refrigeration system monitor provides online temperatures & pressures for troubleshooting and monitoring (cannot be used with thermocouple monitor option).



Enhanced Functionality

- Adapt-a-tune technology provides the ultimate in chamber performance and control stability.
- Product control feature accelerates temperature cycling of the device under test.
- Product high/low limit protects product.
- Fully configurable alarm settings, maintenance messages and audible alarms.
- Full system security allows up to 30 different users with three different levels of security.
- Selectable power failure/recovery options.



CSZ is your one stop solution for ...

- Environmental Chambers
- Freezers
- System Upgrades
- Preventative Maintenance
- Calibration Services
- Contract Testing Services

Cincinnati Sub-Zero Products, Inc.
12011 Mosteller Road
Cincinnati, OH 45241
(p) 513-772-8810
(f) 513-772-9119
www.cszindustrial.com