

CSZ EZ-VIEW

TEST CHAMBER CONTROL, MONITORING & DATA LOGGING SOFTWARE



CSZ's EZ-View Software

CSZ's EZ-View software provides chamber control, monitoring, and data logging for up to 128 devices on a single PC. Incorporates frequently used functions of the CSZ EZT controller all from one workstation making EZ-View the ideal choice to easily manage the test chambers in your lab. Remote Desktop provides the ability to remotely control & monitor all of the chambers on the link from one PC.

Simplified Programming

Profile entry with spreadsheet and graph monitoring of complete profile. Easily create profiles and download to all CSZ chambers on the link. Profiles may also be exported to USB drive.

EZT-560 Overview

EZT-570/560 Overview Screen

Current Profile Loaded Is: Humidity_C

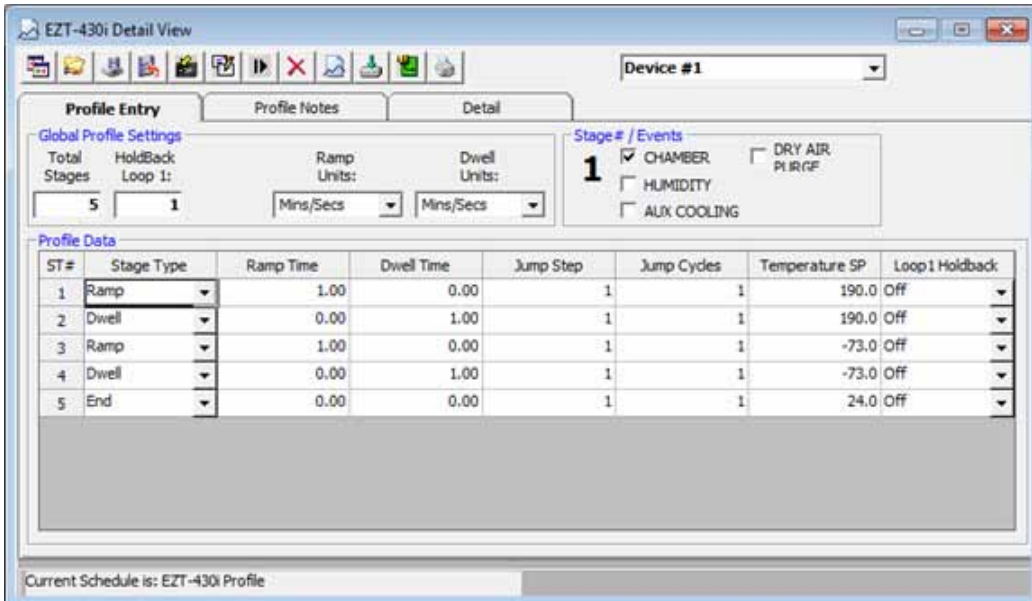
EZT-570/560 Profile Screen

Stop, start and hold profiles.

Profile status view provides an at-a-glance view of current profile condition along with estimated stop date/time, current step and time remaining in the profile.



EZT-430i Overview Screen



EZT-430i Profile Screen

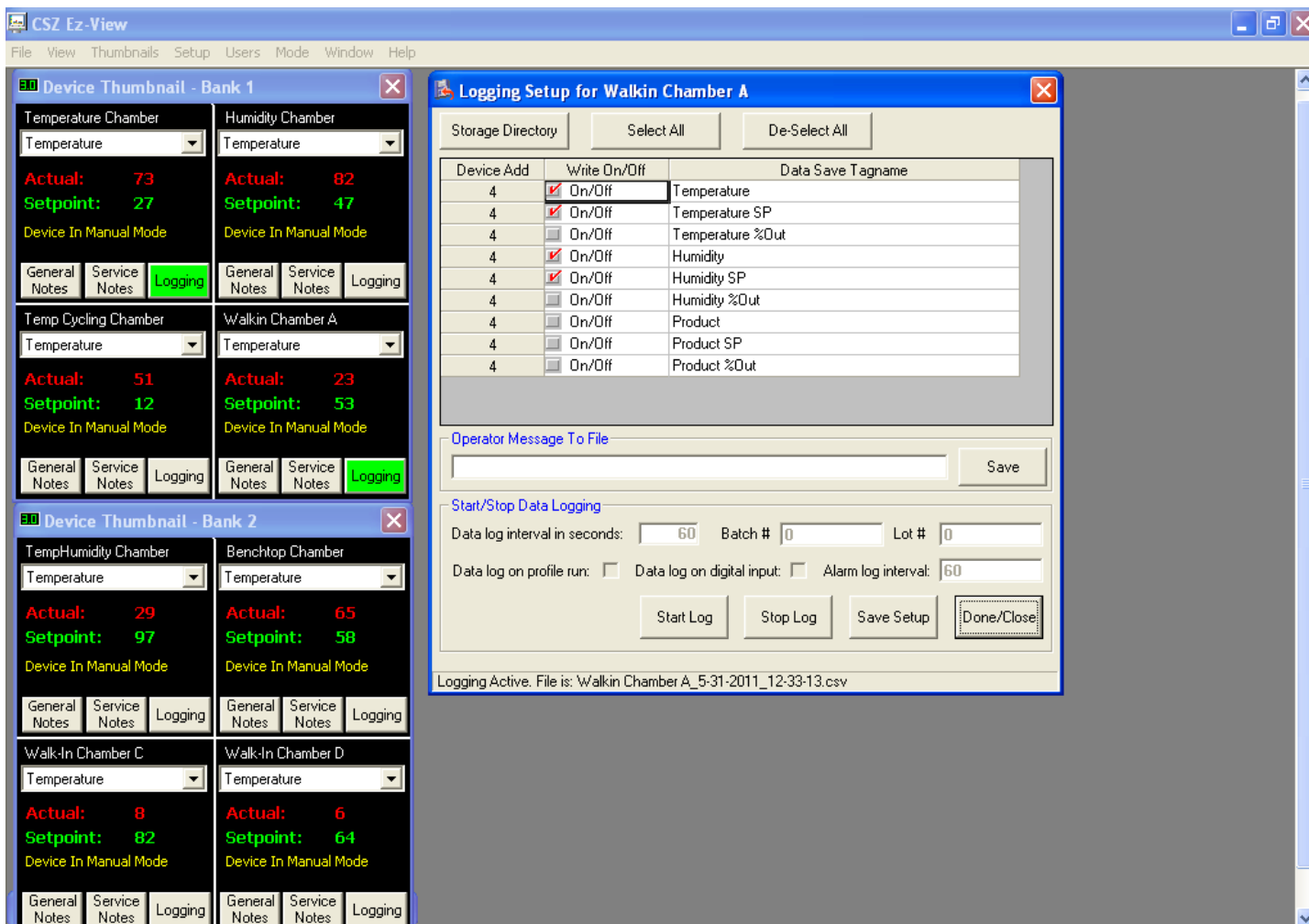
CSZ's EZ-View Software

Advanced data logging functionality

- Dedicated data logging files for each device with quick download of data to .CSV file.
- Built-in data file search function. Search for any operator event or data string across all data files and user assigned directories on local or network drives.
- Advanced historical data log viewer & graph trending. Graphic user interface provided for all tools including zoom and data selection (continuous and discontinuous data supported). EZ-View can be installed on any PC to access historical data while running in simulation mode.
- Full system security with encryption on all data files including support for electronic signatures provide tamper-proof operation for all data files.
- Data log overview screen provides data logging details for all chambers and devices on the link in a single easy to use window. Data logging status, filename and directory information are provided.
- EZ-View data files can be configured to start and stop based on EZT-560/570i profile operation (automated data logging).



Dev#	Log Status	Log Name
1	Temperature Chamber	Temperature Chamber_5-20-2011_15-54-14.csv
2	Humidity Chamber	Humidity Chamber_5-20-2011_15-55-56.csv
3	Temp Cycling Chamber	Temp Cycling Chamber_5-20-2011_15-56-22.csv
4	Benchtop Chamber	
5	TempHumidity Chamber	
6	Walk-In Chamber B	
7	Walk-In Chamber C	

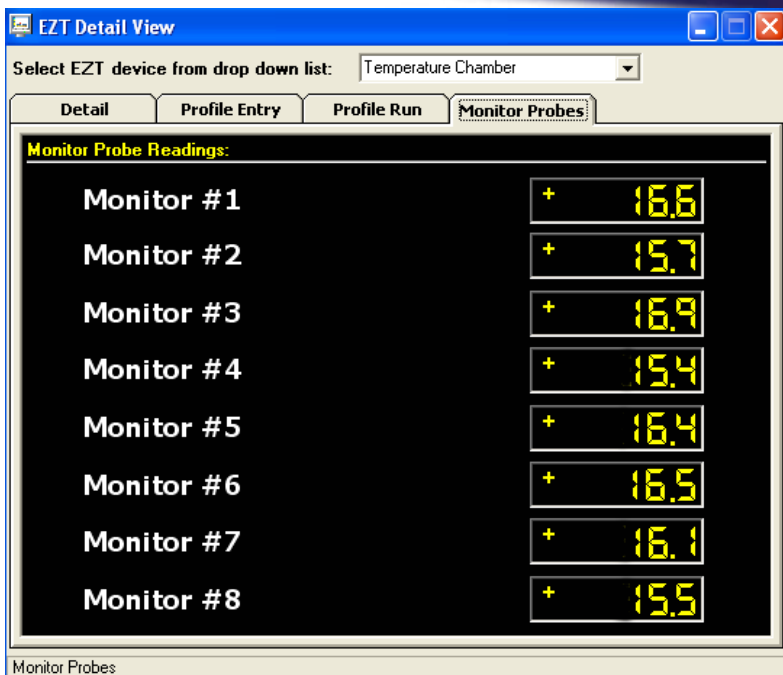


The screenshot displays the CSZ Ez-View software interface. On the left, there are two 'Device Thumbnail - Bank' windows. Bank 1 shows four chambers: Temperature Chamber (Actual: 73, Setpoint: 27), Humidity Chamber (Actual: 82, Setpoint: 47), Temp Cycling Chamber (Actual: 51, Setpoint: 12), and Walkin Chamber A (Actual: 23, Setpoint: 53). Bank 2 shows four chambers: TempHumidity Chamber (Actual: 29, Setpoint: 97), Benchtop Chamber (Actual: 65, Setpoint: 58), Walk-In Chamber C (Actual: 8, Setpoint: 82), and Walk-In Chamber D (Actual: 6, Setpoint: 64). All devices are in 'Manual Mode'. On the right, the 'Logging Setup for Walkin Chamber A' window is open. It features a table for logging configuration:

Device Add	Write On/Off	Data Save Tagname
4	<input checked="" type="checkbox"/> On/Off	Temperature
4	<input checked="" type="checkbox"/> On/Off	Temperature SP
4	<input type="checkbox"/> On/Off	Temperature %Out
4	<input checked="" type="checkbox"/> On/Off	Humidity
4	<input checked="" type="checkbox"/> On/Off	Humidity SP
4	<input type="checkbox"/> On/Off	Humidity %Out
4	<input type="checkbox"/> On/Off	Product
4	<input type="checkbox"/> On/Off	Product SP
4	<input type="checkbox"/> On/Off	Product %Out

Below the table, there are fields for 'Operator Message To File' and 'Start/Stop Data Logging'. The 'Start/Stop Data Logging' section includes: Data log interval in seconds: 60, Batch #: 0, Lot #: 0, and checkboxes for 'Data log on profile run' and 'Data log on digital input'. An 'Alarm log interval' is set to 60. Buttons for 'Start Log', 'Stop Log', 'Save Setup', and 'Done/Close' are present. At the bottom, it indicates 'Logging Active. File is: Walkin Chamber A_5-31-2011_12-33-13.csv'.

Easily setup data logging and manage data log files for multiple chambers in a few clicks of a mouse. Save batch and lot numbers along with operator comments in the data file.



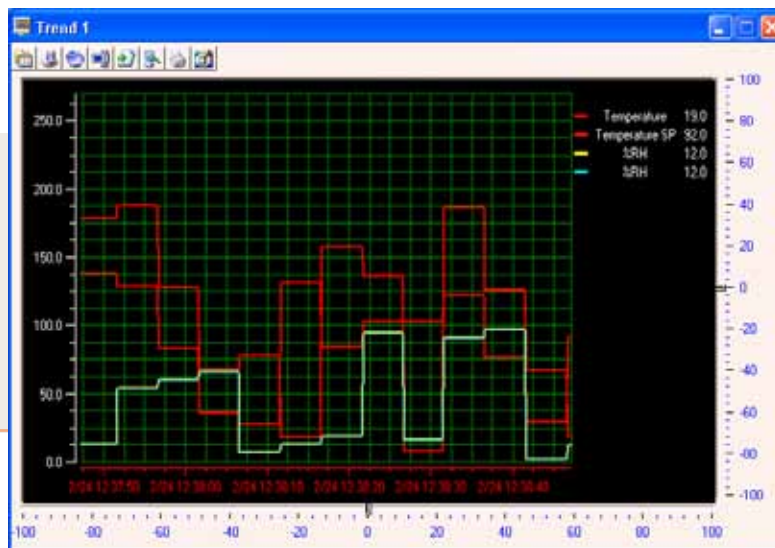
Temperature Monitoring (EZT-570/EZT-560)

Provides temperature readout for optional monitoring package using 8 thermocouples. Additional input cards are available to expand temperature read out and data logging for 16 or 32 inputs.

Values are included in data log file and may be exported as a .CSV file for use in other software programs.

Trend Graphs

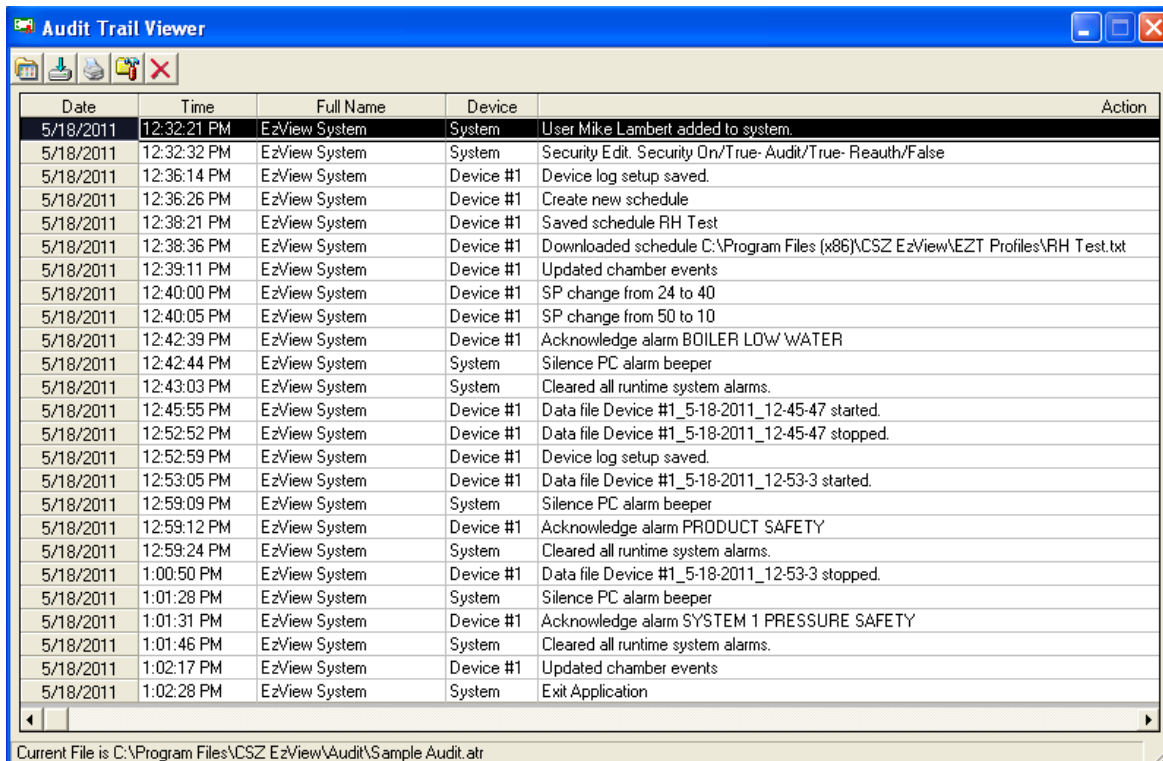
Flexible trending allows for 96 user configurable points across 8 different trend graphs. Trend graphs include zoom capabilities with complete setup of all points and colors. Real time trends provide unlimited "save sets" per trend.



CSZ's EZ-View Software

System & Data Security

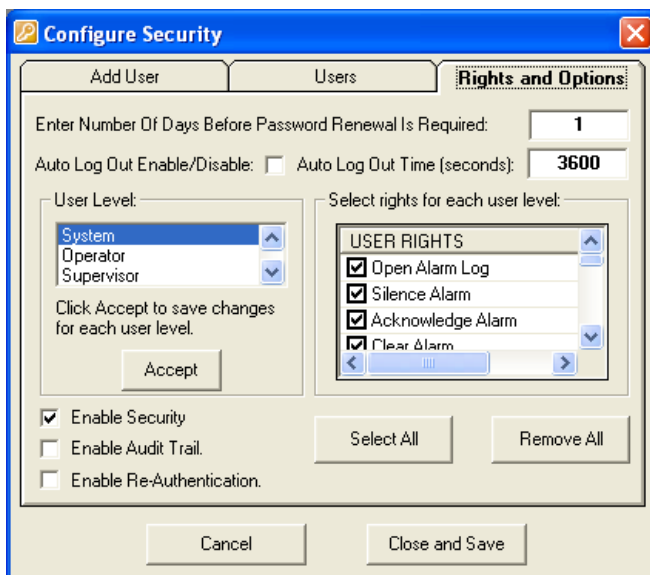
Windows security with 4 security levels (system, operator, supervisor and administrator) and user security rights configurable for all EZ-View program operations. Audit trail files are created daily for tracking of all user actions for traceability.



The screenshot shows the 'Audit Trail Viewer' window with a table of system events. The table has five columns: Date, Time, Full Name, Device, and Action. The events are listed chronologically from 12:32:21 PM to 1:02:28 PM on 5/18/2011. The actions include user logins, security edits, schedule management, SP changes, alarm acknowledgments, and file operations.

Date	Time	Full Name	Device	Action
5/18/2011	12:32:21 PM	EzView System	System	User Mike Lambert added to system.
5/18/2011	12:32:32 PM	EzView System	System	Security Edit. Security On/True- Audit/True- Reauth/False
5/18/2011	12:36:14 PM	EzView System	Device #1	Device log setup saved.
5/18/2011	12:36:26 PM	EzView System	Device #1	Create new schedule
5/18/2011	12:38:21 PM	EzView System	Device #1	Saved schedule RH Test
5/18/2011	12:38:36 PM	EzView System	Device #1	Downloaded schedule C:\Program Files (x86)\CSZ EzView\EZT Profiles\RH Test.txt
5/18/2011	12:39:11 PM	EzView System	Device #1	Updated chamber events
5/18/2011	12:40:00 PM	EzView System	Device #1	SP change from 24 to 40
5/18/2011	12:40:05 PM	EzView System	Device #1	SP change from 50 to 10
5/18/2011	12:42:39 PM	EzView System	Device #1	Acknowledge alarm BOILER LOW WATER
5/18/2011	12:42:44 PM	EzView System	System	Silence PC alarm beeper
5/18/2011	12:43:03 PM	EzView System	System	Cleared all runtime system alarms.
5/18/2011	12:45:55 PM	EzView System	Device #1	Data file Device #1_5-18-2011_12-45-47 started.
5/18/2011	12:52:52 PM	EzView System	Device #1	Data file Device #1_5-18-2011_12-45-47 stopped.
5/18/2011	12:52:59 PM	EzView System	Device #1	Device log setup saved.
5/18/2011	12:53:05 PM	EzView System	Device #1	Data file Device #1_5-18-2011_12-53-3 started.
5/18/2011	12:59:09 PM	EzView System	System	Silence PC alarm beeper
5/18/2011	12:59:12 PM	EzView System	Device #1	Acknowledge alarm PRODUCT SAFETY
5/18/2011	12:59:24 PM	EzView System	System	Cleared all runtime system alarms.
5/18/2011	1:00:50 PM	EzView System	Device #1	Data file Device #1_5-18-2011_12-53-3 stopped.
5/18/2011	1:01:28 PM	EzView System	System	Silence PC alarm beeper
5/18/2011	1:01:31 PM	EzView System	Device #1	Acknowledge alarm SYSTEM 1 PRESSURE SAFETY
5/18/2011	1:01:46 PM	EzView System	System	Cleared all runtime system alarms.
5/18/2011	1:02:17 PM	EzView System	Device #1	Updated chamber events
5/18/2011	1:02:28 PM	EzView System	System	Exit Application

Current File is C:\Program Files\CSZ EzView\Audit\Sample Audit.atr

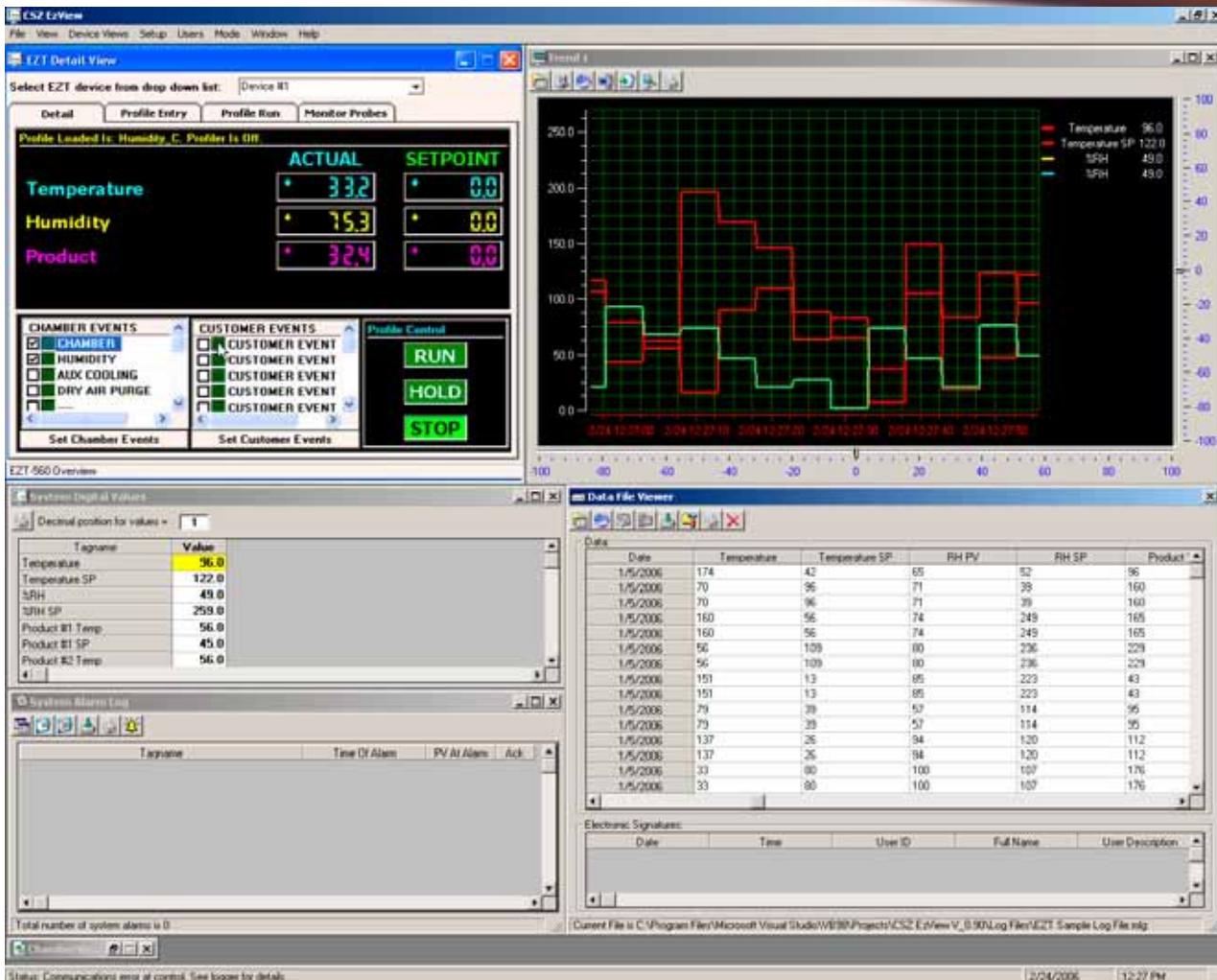


The 'Configure Security' dialog box is shown with the 'Rights and Options' tab selected. It contains several configuration options:

- Add User** and **Users** tabs.
- Enter Number Of Days Before Password Renewal Is Required:** 1
- Auto Log Out Enable/Disable:** (unchecked)
- Auto Log Out Time (seconds):** 3600
- User Level:** System, Operator, Supervisor (System is selected)
- Select rights for each user level:** USER RIGHTS
 - Open Alarm Log
 - Silence Alarm
 - Acknowledge Alarm
 - Clear Alarm
- Enable Security:** (checked)
- Enable Audit Trail:** (unchecked)
- Enable Re-Authentication:** (unchecked)

Buttons: Add User, Users, Accept, Select All, Remove All, Cancel, Close and Save.

Multiple windows may be displayed at the same time for increased efficiency.



Additional Features

- Configurable email and text message alarm notification.
- 200 configurable software alarms. User may add custom alarm conditions without the modification or change to any hardware on the communication link.
- Alarm monitoring and logging. Alarm active time, de-activated time, user acknowledgment and alarm type are logged and tracked for historical viewing.
- Configurable master alarm and auto dialer capabilities at a single PC station using a “plug and play” USB relay module.
- Allows connection of up to 31 chambers to a single PC using EIA-485.

Compatibility

- Windows 98, NT, XP, Vista, and Windows 7.
- CSZ EZT-570S, EZT-570, EZT-560, EZT-430i and P91 controllers.



Cincinnati Sub-Zero is a product brand of Weiss Technik North America, Inc. Weiss Technik North America is a member of the Weiss Technik group of companies, a division of the Schunk Group with its headquarters in Heuchelheim, Germany. Weiss Technik is the world's largest manufacturer of environmental simulation systems and employs more than 2,400 people in 22 group companies in 15 countries.



Testing Services

Our A2LA Accredited Test Laboratory provides environmental simulation testing utilizing the latest test technology to meet your testing needs from product qualification testing, overflow testing and /or third party product validation. Capabilities include Temperature, Humidity, and/or Vibration, Thermal Shock, Burn-in, Radiator Testing, Altitude, Vibration, HALT/HASS, Shock, Salt Spray, Cyclic Corrosion test and Drop Testing. Serving you from two locations in Cincinnati, OH and Sterling Heights, MI.

FOR MORE INFORMATION please call our Testing headquarters at 513-793-7774 or visit www.wnatesting.com.



Weiss Technik North America, Inc.
Cincinnati Facility
12011 Mosteller Road
Cincinnati, OH 45241

(p) 513-326-5252
(f) 513-326-5258

www.cszproducts.com