

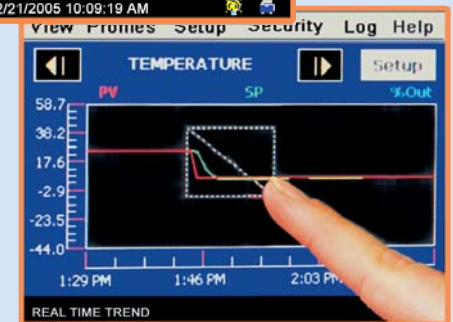
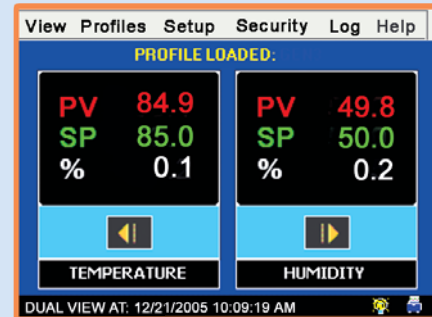
EZT-560i Touch Screen Controller

Time-Saving Features to Test Faster

EZ→Programming EZ→Datalogging

EZ→To be Connected to Your Test World

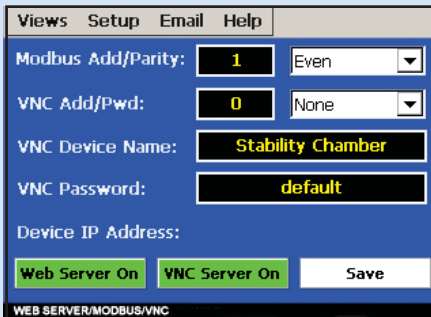
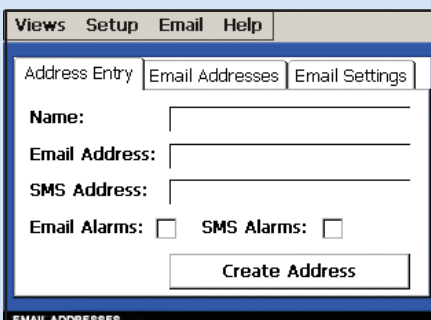
CSZ's EZT-560i controller offers the latest in test chamber programming. Flexible configurations along with a full range of user-friendly features combine to simplify programming and save valuable time for greater return on your investment. Intuitive controller includes built-in safeties to protect your chamber and product under test.



Communications & Connectivity

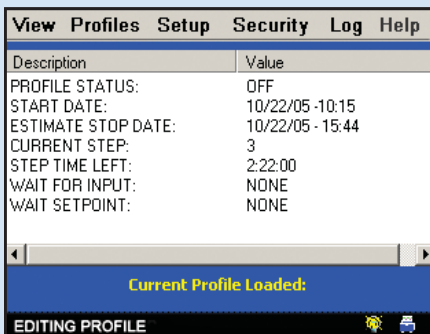
- Ethernet capability to remotely monitor and control multiple test chambers. This also allows for remote troubleshooting.
- Automated "Ethernet" back-up of data files provides "hassle free" file management. A backup copy of the data can be stored at each EZT controller to provide distributed data storage, thereby offering enhanced data protection.
- Alarm notification system sends email and/or text phone messages in the event of a test chamber alarm, saving valuable tests while reducing downtime.
- Integrated email sends data files directly from the controller with a touch of a button. Up to 30 email addresses can be entered at each EZT-560i controller.
- Wired, wireless, local area network or World Wide Web Ethernet connectivity provides anytime, anywhere access.
- Easily download profiles, alarm files, audit trail files and data files to a USB compatible memory stick. Also import profiles to other chambers saving valuable profile entry time.
- EIA-232/485 Serial Communications and optional GPIB (IEEE-488).
- Featured Software - Monitor and control up to 20 chambers from any location with CSZ's EZ-View software

New integrated communications system incorporates web, data and email access so there is no need for separate devices such as recorders, data loggers, email programs, etc.

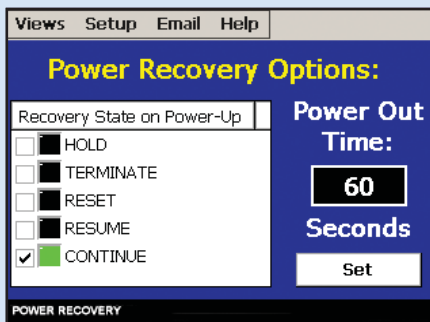

User Convenience & Flexibility

- Unlimited profiles with up to 99 steps each.
- Real time & historical trend graphs with the drag-n-zoom feature provides the ability to touch and zoom into specific areas of the graph with the ability to print graphs directly to a printer.
- On-line help provides menu specific information for user convenience.
- Adjustable data logging intervals provide the flexibility to adjust both file length and logging rate to meet “user defined” data logging requirements.
- Profile status view provides details on the profile with stop date/time.
- Profile autostart allows profiles to begin at a date, day and time.
- Access alarm history files and view detail for troubleshooting.
- System monitor displays run time and cycles of all major components.
- Automatic daylight savings time function & “Ethernet” clock synchronization with user selectable national time server.
- Profile step time adjustment allows the operator to make a one-time change to the time remaining in a step of an operating profile under varying test conditions without affecting the stored profile.



Enhanced Functionality

- Audit trail tracks changes in settings by each user.
- Adapt-a-tune technology provides the ultimate in chamber performance and control stability.
- Product control feature accelerates temperature cycling of the device under test.
- Product high/low limit protects product.
- Fully configurable alarm settings, maintenance messages and audible alarms.
- Full system security allows up to 30 different users with three different levels of security.
- Selectable power failure/recovery functionality with power recovery resume option allows profile to continue from the point where it would have been if power was not lost allowing production schedules to be maintained.
- Automatic daylight savings time function & “Ethernet” clock synchronization with user selectable national time server.
- Monitor option provides up to 8 inputs for monitoring with individual alarms, displays, and data logging for each input.
- Digital input option provides 8 inputs that can be configured for various control functions including starting, stopping and pausing a profile. “Wait for” function allows the user to pause a profile during a particular step of the profile until a specific digital input is turned on or off.
- Digital output “customer event” feature now provides all 15 outputs with purchased option. Each output can be configured to perform other operations including alarm or profile status indicators for more control over your testing.



Cincinnati Sub-Zero Products, Inc.
 12011 Mosteller Road
 Cincinnati, OH 45241
 513-772-8810 1-800-989-7373
www.cszindustrial.com

