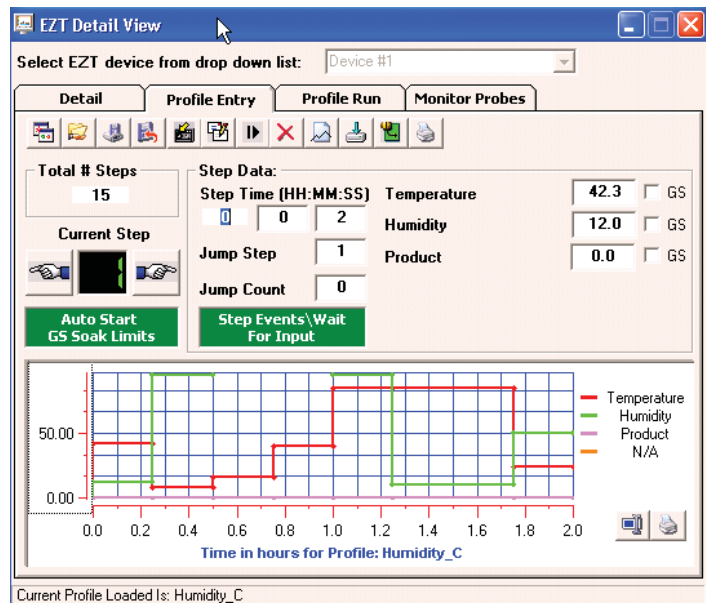
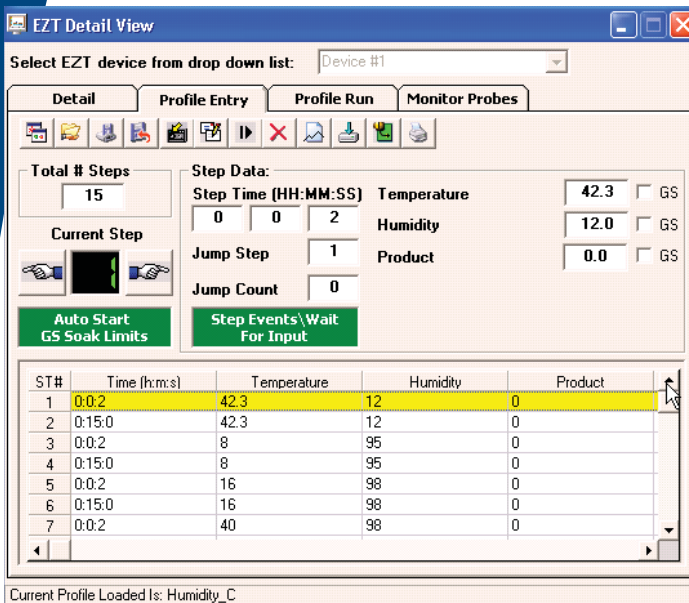


CSZ EZ-View for simplified chamber control, monitoring & data management

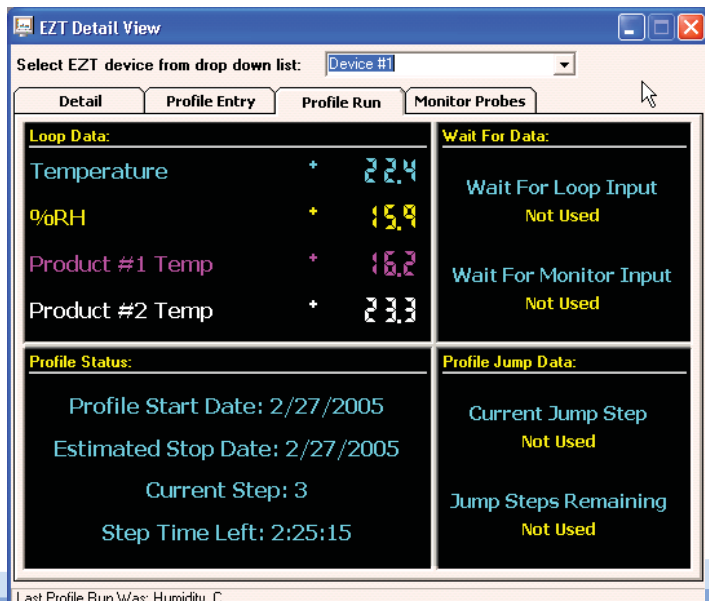
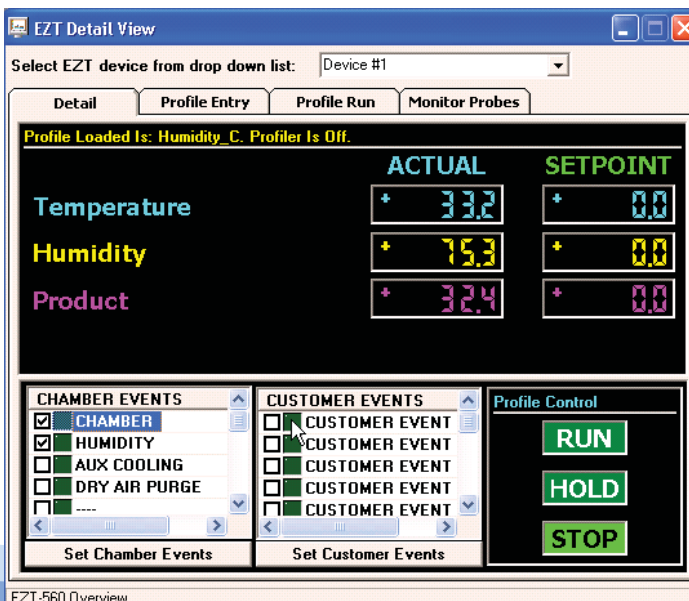
CSZ's EZ-View software provides chamber control, monitoring, and data logging for up to 128 devices on a single PC. Incorporates frequently used functions of the CSZ EZT controller all from one workstation making EZ-View the ideal choice to easily manage the test chambers in your lab. Remote Desktop provides the ability to remotely control & monitor all of the chambers on the link from one PC.

Simplified Programming

Profile entry with spreadsheet and graph monitoring of complete profile. Easily create profiles and download to all CSZ chambers on the link. Profiles may also be exported to USB drive.



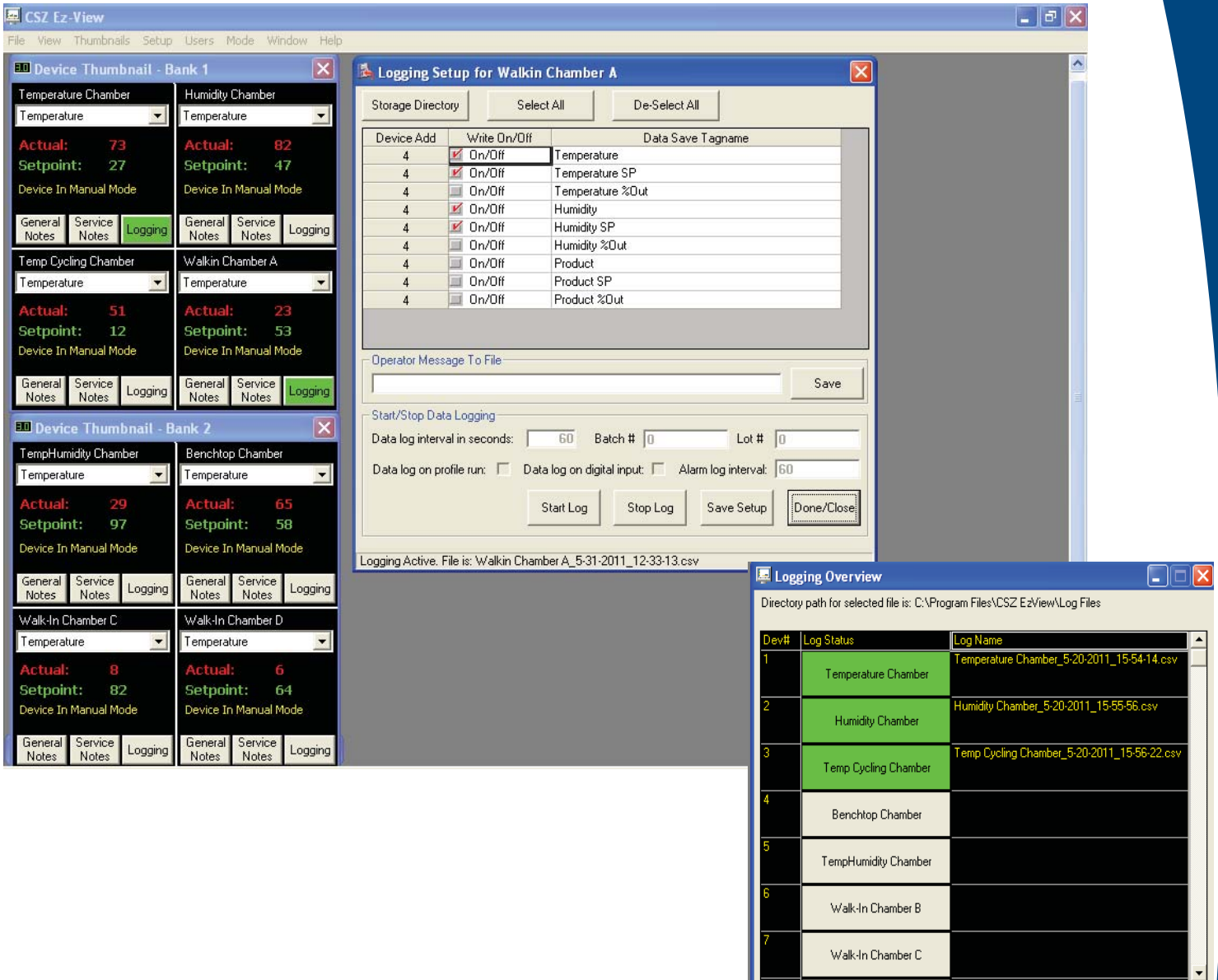
Stop, start and hold profiles. Profile status view provides an at-a-glance view of current profile condition along with estimated stop date/time, current step and time remaining in the profile.

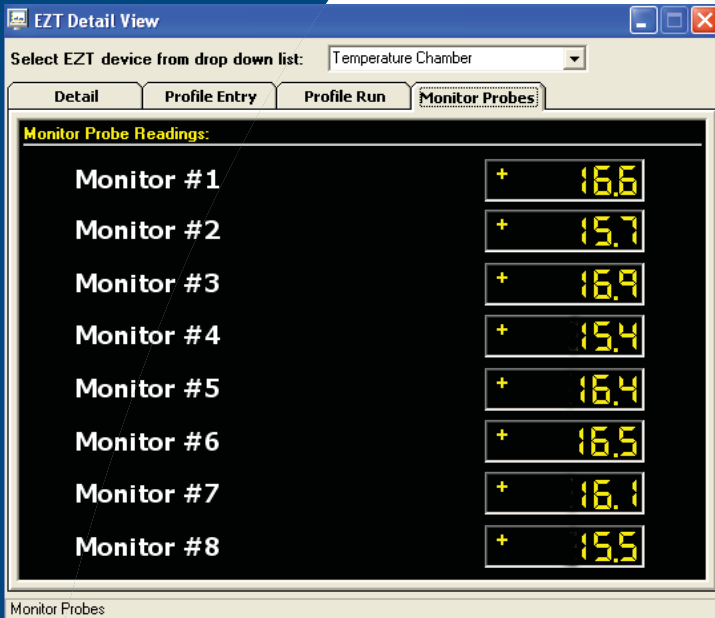


Advanced data logging functionality

Easily setup data logging and manage data log files for multiple chambers in a few clicks of a mouse. Save batch and lot numbers along with operator comments in the data file.

- Dedicated data logging files for each device with quick download of data to .CSV file.
- Built-in data file search function. Search for any operator event or data string across all data files and user assigned directories on local or network drives.
- Advanced historical data log viewer & graph trending. Graphic user interface provided for all tools including zoom and data selection (continuous and discontinuous data supported). EZ-View can be installed on any PC to access historical data while running in simulation mode.
- Full system security with encryption on all data files including support for electronic signatures provide tamper-proof operation for all data files.
- Data log overview screen provides data logging details for all chambers and devices on the link in a single easy to use window. Data logging status, filename and directory information are provided.
- EZ-View data files can be configured to start and stop based on EZT-560/570i profile operation (automated data logging).

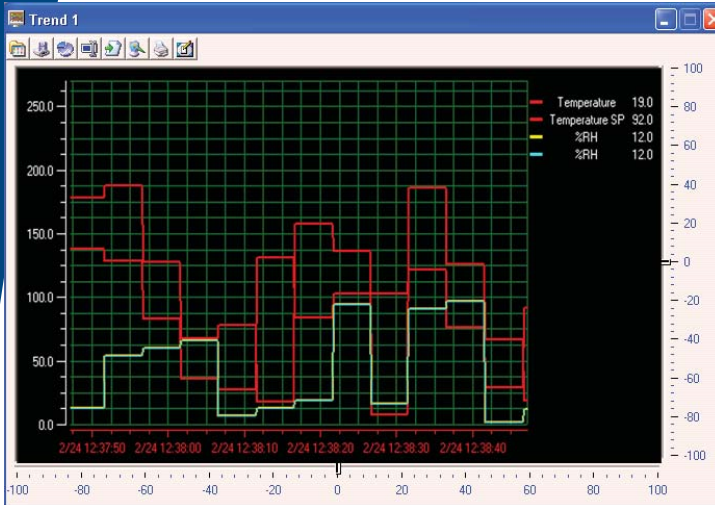




Temperature Monitoring

Provides temperature readout for optional monitoring package using 8 thermocouples. Additional input cards are available to expand temperature read out and data logging for 16 or 32 inputs.

Values are included in data log file and may be exported as a .CSV file for use in other software programs.



Trend Graphs

Flexible trending allows for 96 user configurable points across 8 different trend graphs. Trend graphs include zoom capabilities with complete setup of all points and colors. Real time trends provide unlimited "save sets" per trend.

System & Data Security

Windows security with 4 security levels (system, operator, supervisor and administrator) and user security rights configurable for all EZ-View program operations. Audit trail files are created daily for tracking of all user actions for traceability.

Date	Time	Full Name	Device	Action
5/18/2011	12:32:21 PM	EzView System	System	User Mike Lambert added to system.
5/18/2011	12:32:32 PM	EzView System	System	Security Edit. Security On/True; Audit/True; Reauth/False
5/18/2011	12:36:14 PM	EzView System	Device #1	Device log setup saved.
5/18/2011	12:36:26 PM	EzView System	Device #1	Create new schedule
5/18/2011	12:38:21 PM	EzView System	Device #1	Saved schedule RH Test
5/18/2011	12:38:36 PM	EzView System	Device #1	Downloaded schedule C:\Program Files (x86)\CSZ\EzView\EZT Profiles\RH Test.txt
5/18/2011	12:39:11 PM	EzView System	Device #1	Updated chamber events
5/18/2011	12:40:00 PM	EzView System	Device #1	SP change from 24 to 40
5/18/2011	12:40:05 PM	EzView System	Device #1	SP change from 50 to 10
5/18/2011	12:42:39 PM	EzView System	Device #1	Acknowledge alarm BOILER LOW WATER
5/18/2011	12:42:44 PM	EzView System	System	Silence PC alarm beeper
5/18/2011	12:43:03 PM	EzView System	System	Cleared all runtime system alarms.
5/18/2011	12:45:55 PM	EzView System	Device #1	Data file Device #1_5-18-2011_12-45-47 started.
5/18/2011	12:52:52 PM	EzView System	Device #1	Data file Device #1_5-18-2011_12-45-47 stopped.
5/18/2011	12:52:59 PM	EzView System	Device #1	Device log setup saved.
5/18/2011	12:53:05 PM	EzView System	Device #1	Data file Device #1_5-18-2011_12-53-3 started.
5/18/2011	12:59:09 PM	EzView System	System	Silence PC alarm beeper
5/18/2011	12:59:12 PM	EzView System	Device #1	Acknowledge alarm PRODUCT SAFETY
5/18/2011	12:59:24 PM	EzView System	System	Cleared all runtime system alarms.
5/18/2011	1:00:50 PM	EzView System	Device #1	Data file Device #1_5-18-2011_12-53-3 stopped.
5/18/2011	1:01:28 PM	EzView System	System	Silence PC alarm beeper
5/18/2011	1:01:31 PM	EzView System	Device #1	Acknowledge alarm SYSTEM 1 PRESSURE SAFETY
5/18/2011	1:01:46 PM	EzView System	System	Cleared all runtime system alarms.
5/18/2011	1:02:17 PM	EzView System	Device #1	Updated chamber events
5/18/2011	1:02:28 PM	EzView System	System	Exit Application

Configure Security

Add User | Users | **Rights and Options:**

Enter Number Of Days Before Password Renewal Is Required:

Auto Log Out Enable/Disable: Auto Log Out Time (seconds):

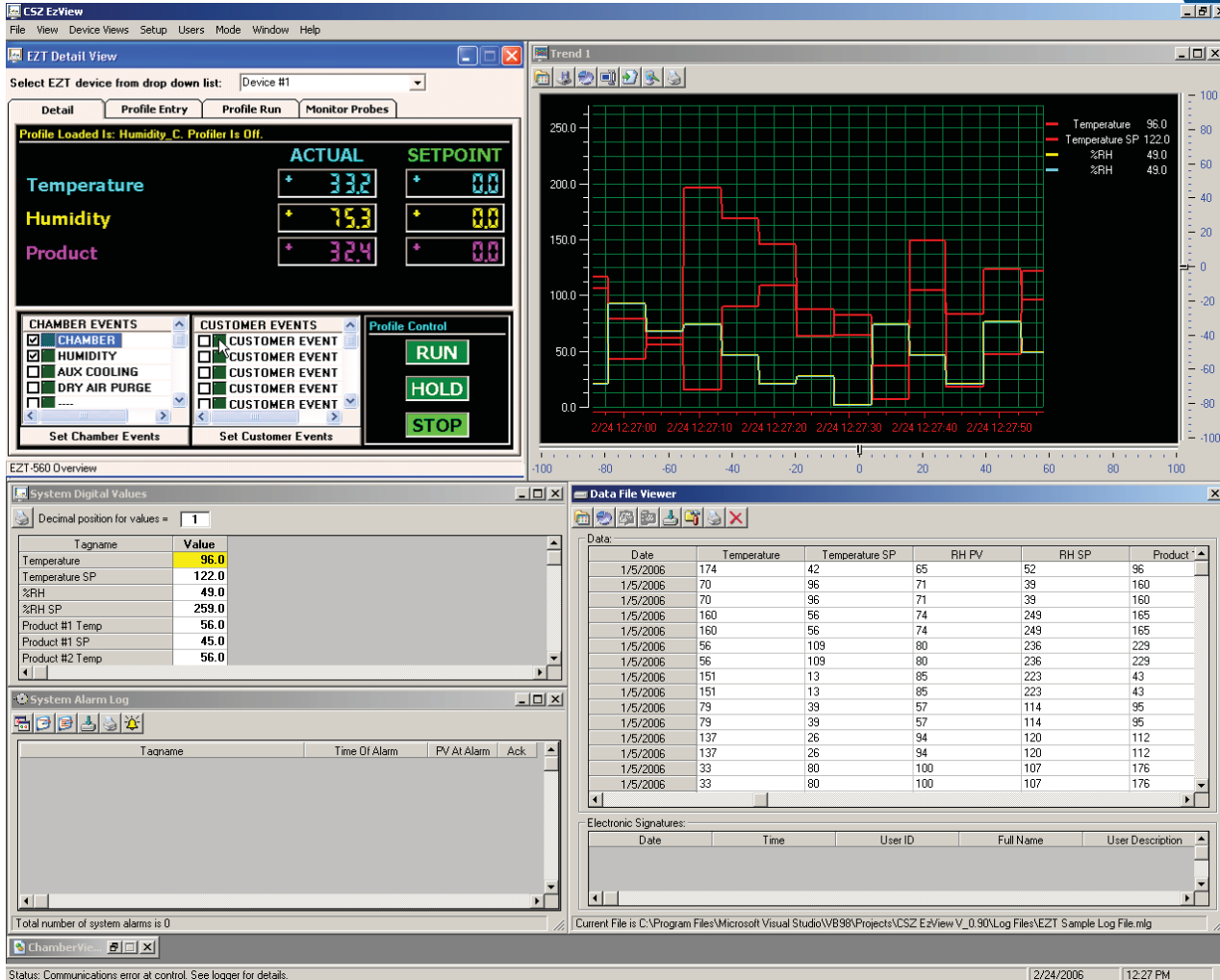
User Level:

Select rights for each user level:
USER RIGHTS
 Open Alarm Log
 Silence Alarm
 Acknowledge Alarm
 Clear Alarm

Click Accept to save changes for each user level.

Enable Security
 Enable Audit Trail.
 Enable Re-Authentication.

Multiple windows may be displayed at the same time for increased efficiency.



Additional Features

- Configurable email and text message alarm notification.
- 200 configurable software alarms. User may add custom alarm conditions without the modification or change to any hardware on the communication link.
- Alarm monitoring and logging. Alarm active time, de-activated time, user acknowledgment and alarm type are logged and tracked for historical viewing.
- Configurable master alarm and auto dialer capabilities at a single PC station using a "plug and play" USB relay module.
- Allows connection of up to 31 chambers to a single PC using EIA-485.

Compatibility

- Windows 98, NT, XP, Vista, and Windows 7.
- CSZ E2T-560/560i, E2T-570i and P91 controllers.

The Experience you Rely on...

Cincinnati Sub-Zero (CSZ) Products, Inc. is an ISO-9001 certified company with over 70 years of industry experience designing and manufacturing temperature-controlled products of the highest quality, with a commitment to total customer satisfaction.

At CSZ, we offer a complete line of both standard and custom-designed environmental simulation chambers including:

- Temperature Cycling
- Humidity
- Stability Cabinets & Rooms
- Thermal Shock
- Stress-Screening
- Altitude
- AGREE Vibration
- Freezers
- Liquid Chillers
- Liquid Chillers
- Wind & Rain
- Sand & Dust
- Other Temperature Management Solutions

Sizes range from benchtop to full walk-in/drive-in chambers.

TESTING SERVICES

CSZ Testing Services is an A2LA Accredited Test Laboratory utilizing the latest test technology. CSZ is your one stop source for all of your environmental simulation testing needs. Our testing laboratory is here to help with your product qualification testing, overflow testing and /or third party product validation. Testing capabilities include Temperature, Humidity, and/or Vibration, Thermal Shock, Burn-in, Altitude, Vibration, Shock, Salt Spray, and Cyclic Corrosion test. Serving you from two locations in Cincinnati, OH and Sterling Heights, MI. For more information please call CSZ Testing headquarters at 513-793-7774 or visit www.csztesting.com.



CSZ is your one stop solution for ...

- Environmental Chambers
- Freezers
- System Upgrades
- Preventative Maintenance
- Calibration Services
- Contract Testing Services

Cincinnati Sub-Zero Products, Inc.
12011 Mosteller Road
Cincinnati, OH 45241
(p) 513-772-8810
(f) 513-772-9119
www.cszindustrial.com